



# WARLI PAINTING

INDIA'S GLOBAL ART, PROUDLY TRIBAL ART!

---

REGISTERED GEOGRAPHICAL INDICATION NO. 239

# PRODUCT CATALOG 2019



# TABLE OF CONTENTS

About us	01
Warli Paintings	02
Wooden Products	04
Bamboo Products	08
Jute Products	10
Cloth Products	11
Miniature Products	12
Hand Crafted Home	14
Ceramic Products	15
Teracota Products	16
Table Oraganizer	17
Glass Products	18

# ABOUT US

It is the foremost Adivasi art in the Indian territory. These paintings capture the life of the adivasi and offer a valuable insight into their lifestyle. The origin of this art goes back to the Neolithic period between 2500 BC & 3000 BC.

Adivasi Culture expert believes it is a pictorial language used by ancient people before the invention of the script. The ritual paintings are usually done at various occasions. (Fadachya Devi, Saticha Dev, Lagnacha Chauk, Khalyacha Dev, Gavur Kadhane, Kana Kadhane, Nadar Kadhane). Traditionally, these paintings are done on wall, ground, cloth, and the wooden articles as various forms. The Role of Suyin, Bhagat, Savasin, Dhavaleri, Chaukerya, Karbhari, Karhawali is vital in preserving this art for generations.

These paintings use a very basic graphic vocabulary; a circle, a triangle and a square. The circle represents Sun & Moon where as the triangle represents mountain. It is the best example of simplicity about lifestyle. Traditionally, the base is prepared by mixture of the earth & cow dung, making a red ochre background for the wall paintings. White pigment is a mixture of rice paste and water with gum which act as the binding. Bamboo stick is used as a supple like a paintbrush.

Traditional Knowledge of Adivasi community is the source of huge undocumented information. Traditional practices are derived after thousands of years by Adivasi Communities.

Since 1970's this ritual art took a radical turn, when artists started painting for the artistic pursuits & this is then known to the world as "Warli Painting". It is now adopting various techniques & product developments to meet the modern & urban lifestyle for various purposes.





# WARLI PAINTINGS

Every canvas carries a special story, some are inspired from every day work life of an Adivasi, some are inspired from traditions followed by Adivasi, and some are inspired by tendencies of early age.

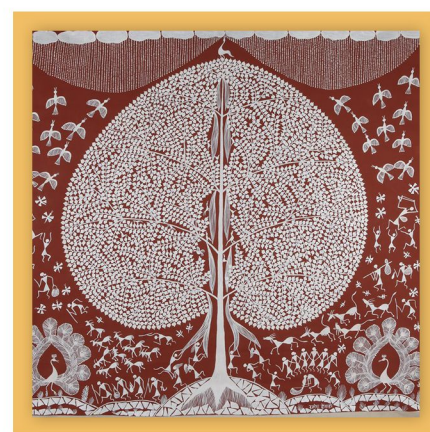
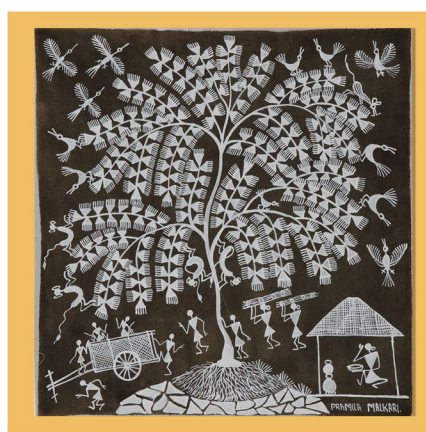
Canvas paintings have special place in decorating interiors and spreading the essence of art. A beautifully stretched fabric or jute with art depicting the culture & traditions of the tribal people from the North Sahyadri Range in India (Maharashtra).

**THESE CANVAS PAINTINGS ARE OF COTTON CANVAS, ART CANVAS & MANJAR PATH WITH FINE QUALITY DESIGNED BY PROFESSIONAL & TRAINED ARTISANS.**





MAKE YOUR WALLS INTERESTING AND NARRATIVE WITH THESE ART PIECES.





## WOODEN PRODUCTS

A fine piece of wood with Warli art is all that you need to give your office or home a classic look.

Wooden products by Warli paintings are designed by professionals for multiple uses. We manufacture different products for office, dining and teapot tables.

Each product is made of fine wood with long-lasting property & every piece is painted with authentic Warli painting. Our wooden products are perfectly crafted, neatly polished and skillfully designed.

**A FINE PIECE OF WOOD WITH WARLI ART IS ALL THAT YOU  
NEED TO GIVE YOUR OFFICE OR HOME A CLASSIC LOOK.**



## KEY CHAINS

We have wide range varieties of key chains which can be a perfect gift for your friends & neighbors from your trip; you can also carry the essence of tribal art into your everyday life. Each keychain is designed to carry the essence of tribal art.

**KEY CHAINS ARE BEST TO GIFT OR TO CARRY A MEMORY.**



## KEY HOLDERS

Each piece is unique and carries a special story of tribal art, work life and daily routines.

**MAKE YOUR WALLS MORE BEAUTIFUL WITH THESE WALL HANGING KEY HOLDERS.**





## MOBILE HOLDERS

Mobile holders painted with authentic Warli art designed to complete your office look.

USE THESE SKILLFULLY CRAFTED MOBILE HOLDERS TO DECORATE YOUR HOME AND OFFICE TABLES.



## PEN HOLDERS

Accessorize your office, reception and teapot tables with these attracting pen holders. Pen holders are must used accessories in every office & house, complete your office look with these tribal art pen holders.

EACH PEN HOLDER IS UNIQUE THE CREATED TO CARRY THE LIFE OF WARLI PEOPLE.



## T COASTERS

Use these crafted T coasters to avoid any kind of tea or coffee marks on your extravagant tables or teapots.

THESE WOODEN CRAFTED WARLI ART T COASTERS WILL BE ADD AN EXTRAVAGANT LOOK TO YOUR EXTRAVAGANT FURNITURE.



## TRAYS

Trays designed for Kitchen, Dining, and Tableware to Serve. Wooden Hand Crafted trays with Warli art can be used for fruit Serving, Tea, Coffee, Snacks, & Water.

ATTRACT YOUR GUEST WITH THESE SERVING TRAYS.



---

# BAMBOO PRODUCTS

The tribal people usually live in the forest areas, thus they have a very close relationship with the natural resources. They try to utilize most of the resources available in the natural environment according to their needs. Apart from economic, political & cultural, their religious aspects are also associated with the flora and fauna.

Bamboos are used as raw material in day to day life. The versatile uses of bamboo have made it the backbone of the tribal traditions.

Bamboo is a versatile group of plants capable of providing ecological, economic & livelihood security to the people of the tribal States of India.

Bamboo has traditionally been used in many ways, from constructions to interior decoration, utensils, art & many.



**EACH BAMBOO PRODUCT IS INSPIRED FROM THE WARLI TRADITION  
AND THEY ARE SKILLFULLY CRAFTED TO DEPICT FOLK TALES.**



We use fine bamboo to make different products and each product represents the style and essence of Mother Nature. Each bamboo product is inspired from the Warli tradition and they are skillfully crafted to depict folk tales.



Bamboos are used as raw material in day to day life such as for house construction, as cordage, as fuel, for crafts, in rituals, as food and medicine. During the scarcity of staple food rice it also served as famine food. The use of certain bamboo crafts have become part and parcel of Karbi culture & the practice is still vibrant today.



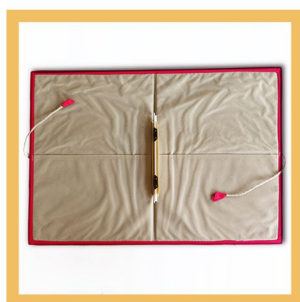
# JUTE PRODUCTS

Jute fabric is a type of coarse and strong material made using rough jute threads. These threads are spun from a strong, soft and lustrous vegetable fiber derived from a plant. It is made from the skin of the plant which is what gives it the rough, raw look it is known for.

Natural jute fabric is one of the most useful materials in the world after cotton.

Jute is known for the unique aesthetic beauty of the fabric as well as its immense cultural importance & usefulness as an eco-friendly fabric.

We produce designer Jute Bag that are neatly crafted using the best grades of raw material & painted with authentic Warli paintings. These are durable, fashionable with the outstanding designs, patterns and finish.



# CLOTH PRODUCTS

Wide range of product style and size are designed and manufactured for various usages. T-shirts, caps are designed with art of community dances, the harvest as well as fields swaying with healthy crops, birds flying in the sky, group dancing around a person playing the music, dancing peacocks, women cooking or busy in their other house chores and children playing.



Find all your comfort clothing with a touch of tribal art here. We manufacture all sizes of T-shirts & caps. Stylize your wardrobe with these authentic tribal art pieces. Gift yourself with these perfect, comfortable and in style clothing.

**THESE ARE PERFECTLY MADE FOR YOU  
TO BE IN FASHION AND STAND OUT FOR  
TRADITIONS.**





## MINIATURE PRODUCTS

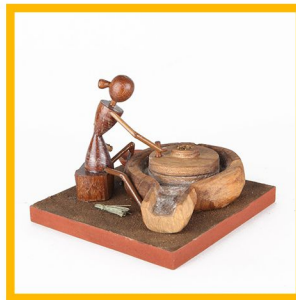
Warli miniature products are all that you need to complete your show case. Every product is inspired by true culture of the tribal people from the North Sahyadri Range in India.

The Warli products are centered on the concept of Mother Nature and elements of nature are often focal points depicted in Warli painting. We design miniature products that depict farming & their work culture as it is the main way of life & a large source of food for the tribe.

**FASCINATING MODELS MADE  
OF STANDARD MATERIAL ARE  
MANUFACTURED BY  
WARLI PAINTINGS.**



## HAND CRAFTED HOME



## HAND CRAFTED WOMEN



## HAND CRAFTED MEN



## HAND CRAFTS

---

# HAND CRAFTED HOME

Hanging products are designed art pieces of Neolithic period, manufactured by various techniques & new methodologies. The idea of manufacturing these products is to preserve the tribe culture and to spread the art for future generations.

Each product is made of fine quality material & neatly sculptured to show an immense understanding of the Warli culture. Every hanging product is the finest example of folk style painted with a set of basic geometric shapes: a circle, a triangle, and a square.

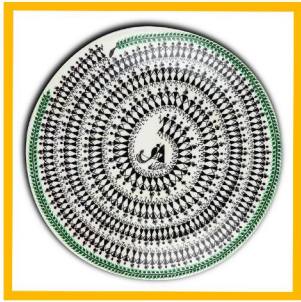


Warli artists use fine wood to imitate their clay huts as the backdrop & white paint for their paintings, similar to how ancient people used cave walls as their canvases.



# CERAMIC PRODUCTS

Ceramic art is art made from ceramic materials, including clay. It may take forms including artistic pottery, including tableware, tiles, figurines and other sculpture. Ceramic art is one of the arts, particularly the visual arts.



While some ceramics are considered fine art, as pottery or sculpture, some are considered to be decorative, industrial or applied art objects.

# TERRACOTA PRODUCTS

Terracotta means “*baked earth*” in Italian. Terracotta is the type of clay used to produce terracotta pottery on a potter’s wheel. The potter at a full tilt rotates the wheel with his hands & gives the ball of clay a shape. The pot or object, after being left to dry is kept on top of combustible materials in a pit and fired.

Terracotta is the term used for unglazed earthenware, and for ceramic sculpture made in it. Indian sculpture made heavy use of terracotta from a very early period.



---

# TABLE ORAGANIZER

Find these attractive accessories for your tables. These art pieces made of wood are perfect table ware for your offices. Wide range of pen holders, card holders and paper weights manufactured with fine wood depicting warli traditions and culture in every piece of product.





---

# GLASS PRODUCTS

Check out our brilliant range of vases. Find tribal inspiration & ideas for your home. Put the finishing touches on your space with these decorative glass vases. These products are made of quality material with authentic warli painting and other tribal art ideas.

